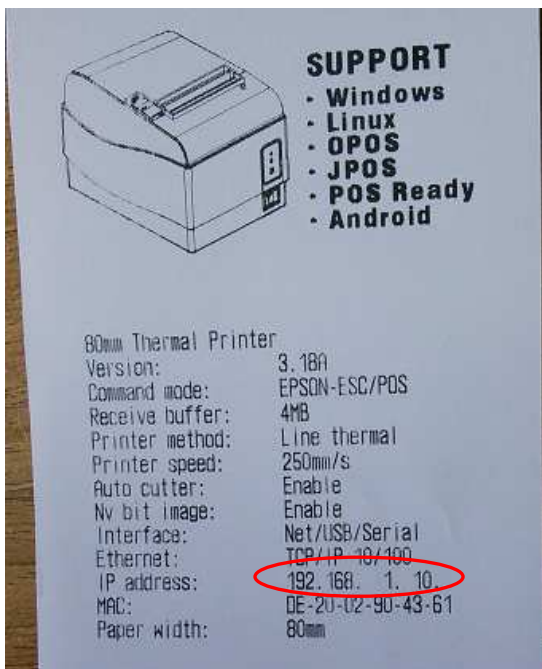
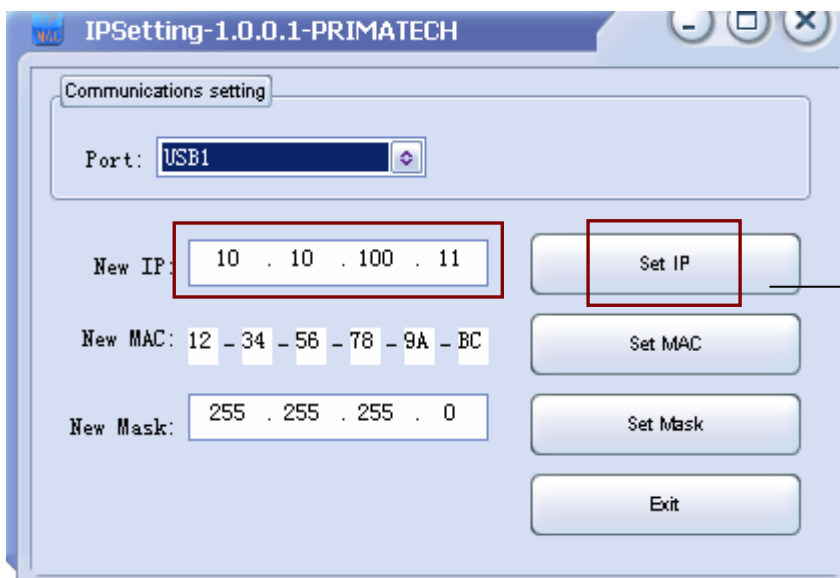
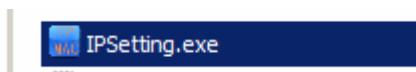


Self test the printer, user can find the current printer ip address on the self test page:
(hold on the Feed button, then power on the printer, it will print out a self test page)



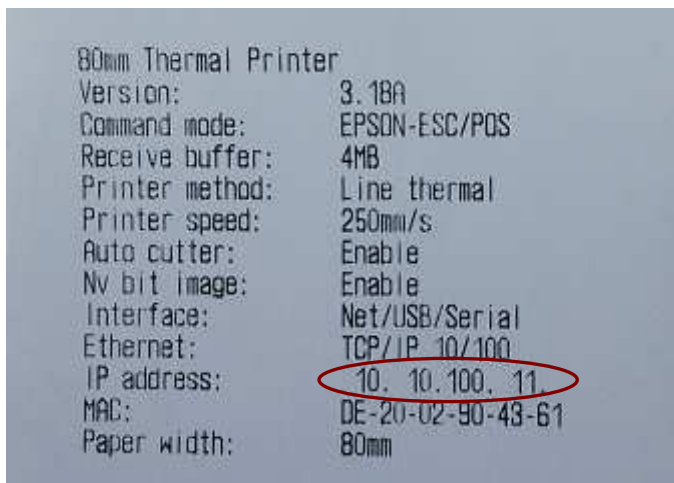
Step 1. Power on the printer, connect it to PC usb port;

Step 2. Launch the software: IPSettings.exe;



Input the ip you want, then click "Set ip", the printer will beep which means the printer get a new ip address.

Step 3. Restart the printer, the new ip should work, user can check it on the self test page.



80mm Thermal Printer
Version: 3.18A
Command mode: EPSON-ESC/POS
Receive buffer: 4MB
Printer method: Line thermal
Printer speed: 250mm/s
Auto cutter: Enable
Nv bit image: Enable
Interface: Net/USB/Serial
Ethernet: TCP/IP 10/100
IP address: 10.10.100.11
MAC: DE-20-02-90-43-61
Paper width: 80mm